



FORD & PARTNERS

ESTATE AGENTS



The Warren Norwood Road, Loudwater, High Wycombe, HP10 9UU

A newly constructed five bedroom, three bathroom (two en-suite) family home constructed by a renowned local developer - completion expected in February 2026.

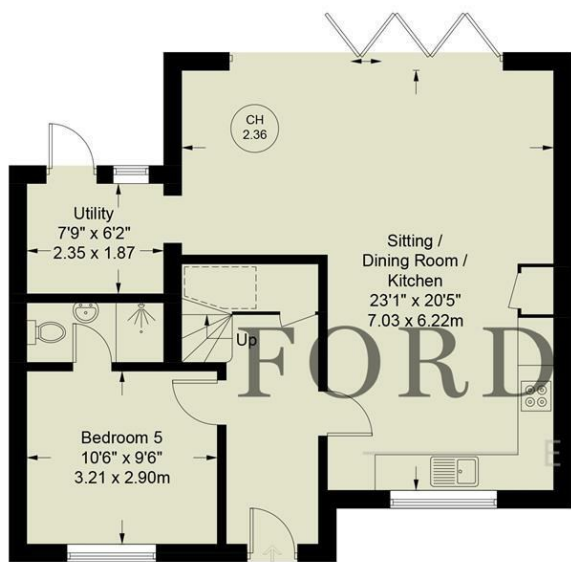
- **Five Double Bedrooms**
- **Two Ensuites**
- **Individually Designs New Build Home**
- **Constructed by Local Developer**
- **Large Bi-Folding Door Leading to Rear Garden**
- **Stunning Open Plan Kitchen and Dining Area**
- **Utility Room**
- **Separate Reception Room/Bedroom Five**
- **Cotswold Stone Driveway**
- **Completion Expected in February 2026**

£895,000

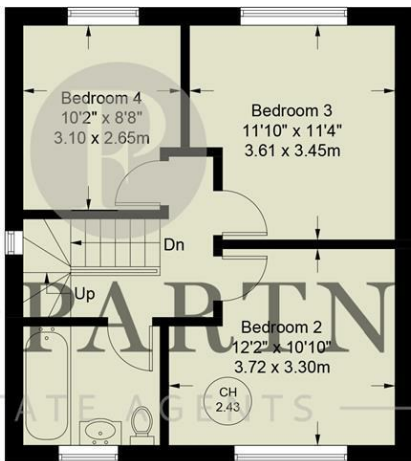
Norwood Road, HP10 9UU



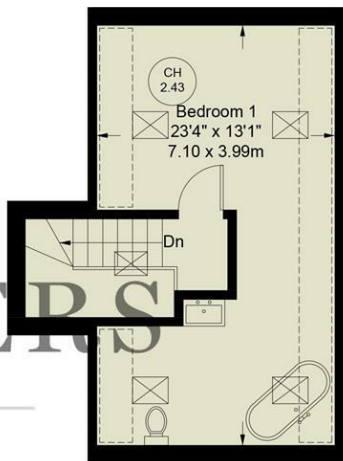
CH 2.43 = Ceiling Height
= Reduced headroom below 1.5m / 5'0"



Ground Floor



First Floor



Second Floor

Floor Plan produced for Ford & Partners by Media Arcade ©.
Illustration for identification purposes only. Window and door openings are approximate. Whilst every attempt is made to assure accuracy in the preparation of this plan, please check all dimensions, shapes and compass bearings before making any decisions reliant upon them.

Energy Efficiency Rating		
	Current	Potential
Very energy efficient - lower running costs		
(92 plus) A		
(81-91) B		
(69-80) C		
(55-68) D		
(39-54) E		
(21-38) F		
(1-20) G		
Not energy efficient - higher running costs		
England & Wales	EU Directive 2002/91/EC	

Environmental Impact (CO ₂) Rating		
	Current	Potential
Very environmentally friendly - lower CO ₂ emissions		
(92 plus) A		
(81-91) B		
(69-80) C		
(55-68) D		
(39-54) E		
(21-38) F		
(1-20) G		
Not environmentally friendly - higher CO ₂ emissions		
England & Wales	EU Directive 2002/91/EC	

